



V.J. ST. PIERRE, JR.  
PARISH PRESIDENT

SAM SCHOLLE  
DIRECTOR

# ST. CHARLES PARISH

## DEPARTMENT OF WASTEWATER

P.O. BOX 705 • LULING, LOUISIANA 70070  
(985) 783-5100 • (985) 783-5102 • Fax: (985) 785-6503  
Website: [www.stcharlesgov.net](http://www.stcharlesgov.net)

### \* NOTICE \*

#### SEWER CONNECTIONS:

You must call the Sewer Department at 783-5100 ahead of time to request a sewer location. Tie-ins will be done as soon as possible in order received on these designated days.

#### SEWER INSPECTIONS:

Inspections of lines are required before you cover the sewer lines. These inspections will be done **everyday after lunch unless an emergency precedes it**. After your line has been inspected and backfilled, you must also call for a BOX INSPECTION. This is to verify that you have installed a sewer box level to the ground at final grade over the 4-inch check valve and 6-inch clean-out(s). Property must be to final grade when installed.

NOTE: WHERE INSPECTION IS NECESSARY BY REASON OF FAILURE TO PASS A PRIOR INSPECTION, A FEE OF \$25.00 (TWENTY FIVE DOLLARS AND NO CENTS) WILL BE CHARGED FOR EACH REINSPECTION.

#### INSPECTION DEFINITIONS:

1. **FIRST INSPECTION** – inspection of uncovered lines after connection to public sewer system
2. **SECOND INSPECTION** – inspection for BOX COVERS level to ground at final grade. Property must be to final grade when installed.



Kathleen Babineaux Blanco  
GOVERNOR

STATE OF LOUISIANA  
DEPARTMENT OF HEALTH AND HOSPITALS



Roxane A. Townsend, M.D.  
SECRETARY

**The Louisiana Administrative Code, Title 51, State Sanitary Code, Part 13, Chapter 7, Paragraph 715.V. states:**

**Abandoned septic tanks (tanks no longer in active use) shall be pumped out by a licensed sewage hauler, then removed or the cover discarded and the tank filled with soil to natural grade. The contents of the abandoned tank shall not be placed into a newly installed individual sewerage system.**

**Therefore, you must contact a licensed sewage hauler to have the system pumped out and the tank should be backfilled with soil to natural grade and the cover removed.**

**A current list of licensed sewage haulers can be obtained from this office.**

**DHH/OPH/St. Charles Parish Environmental Health  
107 C Maryland Drive  
Luling, LA 70070  
985-785-1029**

THE FOLLOWING SPECIFICATIONS SHALL GOVERN THE MATERIALS AND METHODS TO BE EMPLOYED IN THE INSTALLATION OF HOUSE SEWER OR COMMERCIAL SEWERS AND THEIR TIE-IN TO THE SEWER SYSTEM.

1. INTENT:

IT IS THE INTENT OF THESE SPECIFICATIONS TO INSURE TIGHT WORKABLE SEWERS THAT WILL MINIMIZE INFILTRATION AND INVOLVE A MINIMUM OF MAINTENANCE ON THE PART OF BOTH THE PROPERTY OWNER AND THE SEWER DEPARTMENT.

2. EXCAVATIONS:

ALL EXCAVATIONS SHALL BE CARRIED TO A DEPTH AND GRADE FOR BEDDING THE BOTTOM OF THE PIPE BARREL ON UNDISTURBED SOIL. IF THE TRENCH IS INADVERTENTLY CUT TOO DEEP OR TO IMPROPER GRADE AT ANY POINT THE BOTTOM SHALL BE BROUGHT TO PROPER GRADE FOR BEDDING THE PIPE WITH CLAM SHELLS OR A MIXTURE OF EQUAL PARTS OF RIVER SAND AND CLAM SHELLS. NO EXCAVATED MATERIAL OR ANY MATERIAL OTHER THAN SPECIFIED ABOVE SHALL BE PLACED IN THE TRENCH BELOW THE PIPE. THE WIDTH OF THE EXCAVATION SHOULD IN NO CASE EXCEED 18" AT AN ELEVATION 6" ABOVE THE TOP OF THE PIPE.

3. PIPE AND FITTINGS:

3.1 SIZE OF PIPE:

IN THE CASE OF SINGLE AND DUPLEX RESIDENCES CONNECTIONS SHALL BE MADE USING 4" PIPE. IN ALL OTHER CASES THE SIZE REQUIRED SHALL BE DETERMINED AS FOLLOWS:

FOR LINES INSTALLED @ 1/8" PER FOOT SLOPE:

4" UP TO 180 FIXTURE UNITS

6" UP TO 700 FIXTURE UNITS

FOR LINES INSTALLED @ 1/4" PER FOOT SLOPE:

4" UP TO 215 FIXTURE UNITS

6" UP TO 850 FIXTURE UNITS

3.2 TYPE OR PIPE AND FITTINGS:

THE FOLLOWING TYPES AND/OR CLASSES OF PIPE AND FITTINGS ARE ACCEPTABLE:

- 1) ASTM D2661 ABS/DWV SCH 40 SOLID WALL
- 2) ASTM D2665 PVC/DWV SCH 40 SOLID WALL
- 3) ASTM F628 ABS/DWV SCH 40 CELLULAR CORE
- 4) ASTM F891 PVC/DWV SCH 40 CELLULAR CORE
- 5) ASTM F891 PS 50 & PS 100 SEWER PIPE
- 6) ASTM D3034 SDR 35 SEWER GRADE

4. INSTALLATION OF PIPE:

4.1 BEDDING:

THE PIPE SHALL BE BEDDED EITHER ON THE UNDISTURBED SOIL OF THE TRENCH BOTTOM OR A BEDDING COMPOSED OF RIVER SAND OR A MEXTURE OF EQUAL PARTS OR RIVER SAND AND CLAM SHELLS. THE TRENCH BOTTOM OR BEDDING SHALL BE RELIEVED IN WAY OF EACH BALL OR COUPLING SO THAT ALL WEIGHT IS UNIFORMLY SUPPORTED BY THE FULL LENGTH OF THE PIPE BARREL. AS THE LAYING OF THE PIPE PROGRESSES SELECT MATERIAL FROM THE EXCAVATION SHALL BE WORKED AROUND THE PIPE UP TO THE PIPE CENTERLINE TAKING DUE CARE TO MAINTAIN THE PIPE ALIGNMENT AND GRADE.

4.2 LAYING AND JOINTING:

4.2-1 ALL PIPE SHALL BE LAID TRUE TO LINE AND GRADE AT A SLOPE OF NOT LESS THAN 1/8" PER FOOT and PERFERABLY 1/4" PER FOOT TO INSURE ADEQUATE CARRYING VELOCITIES.

4.2-2 ALL WATER SHALL BE EXCLUDED FROM THE TRENCH DURING LAYING AND JOINTING.

- 4.2-3 ALL CHANGES IN DIRECTION SHALL BE MADE WITH "WYE" AND BEND FITTINGS PROVIDING A CLEANOUT AT EACH CHANGE OF DIRECTION.
- 4.2-4 THE USE OF CEMENT MORTAR JOINTS OR JOINTS USING ANY RIGID MATERIAL IS EXPRESSLY PROHIBITED. ALL JOINTS SHALL BE CAREFULLY MADE IN STRICT ACCORDANCE WITH THE PIPE MANUFACTURES INSTRUCTIONS TAKING SPECIAL CARE TO EXCLUDE ALL FOREIGN MATERIAL FROM THE SEALING SURFACES AND TO FULLY SEAT EACH JOINT. IF IT IS NECESSARY TO CUT A LENGTH OF PIPE, THE CUT END SHALL BE JOINED BY A SPECIAL ADAPTER FURNISHED BY THE PIPE MANUFACTURER FOR THIS EXPRESS PURPOSE. IN CONNECTING TO PIPE OR JOINT OF A DIFFERENT MANUFACTURER, THE CONNECTION SHALL BE MADE BY USING AN ADAPTER SUPPLIED BY THE PIPE MANUFACTURER OR AS SUPPLIED BY FERNCO JOINT SEALER COMPANY OR AN APPROVED EQUAL AND IN ALL CASES EXPRESSLY DESIGNATED BY THE MANUFACTURER FOR THE TWO PIPES AND JOINTS INVOLVED.
- 4.2-5 THE ACTUAL CONNECTION TO THE SEWER WILL BE MADE THROUGH AN INCREASER WHERE REQUIRED AND A 6" "WYE". FROM THE OUTLET OF THE "WYE" A 6" CLEANOUT WILL BE EXTENDED TO WITHIN 6" OF THE GROUND SURFACE. THE CLEANOUT AND EXTENSION WILL NOT BE INSTALLED UNTIL AFTER THE LINE HAS BEEN INSPECTED AND PASSED BY THE SEWER DISTRICT.
- 4.2-6 A 4x4x6 CHECK VALVE MUST BE INSTALLED WITHIN 3' FROM THE HOUSE. A PLASTIC OR METAL BOX MUST BE PLACED OVER THE CHECK VALVE. THE BOX MUST BE PLAINLY MARKED "SEWER".
- 4.2-7 A PLASTIC OR METAL SQUARE BOX MUST ALSO BE PLACED OVER THE 6" CLEANOUT. BOX MUST BE PLAINLY MARKED "SEWER".

5. TRAPS AND VENTS:

TO ELIMINATE A POTENTIAL HAZARD THE PROPERTY OWNER SHALL INSURE AND CERTIFY AS A CONDITION TO RECEIVING PERMISSION TO TIE-IN TO THE SEWER THAT ALL FIXTURES AND PARTICULARLY THOSE WITH CONCEALED PIPING SUCH AS TUBS, SHOWERS, AND WASHING MACHINES ARE PROPERLY TRAPPED AND VENTED PRIOR TO CONNECTION TO THE SEWER SYSTEM.

6. ROOF AND AREA DRAINS:

THE PROPERTY OWNER SHALL INSURE AND CERTIFY AS A CONDITION TO RECEIVING PERMISSION TO TIE-IN TO THE SEWER SYSTEM THAT NO ROOF DRAINS, SWIMMING POOLS OR OTHER NON-SANITARY FEATURES ARE OR WILL BE CONNECTED IN THE SEWER SYSTEM.

7. SEPTIC TANKS:

TO ELIMINATE A POTENTIAL HAZARD, THE PROPERTY OWNER WILL INSURE AND CERTIFY AS A CONDITION TO RECEIVING PERMISSION TO CONNECT TO THE SEWER

SYSTEM THAT ALL SEPTIC TANKS HAVE BEEN WITHIN NINETY (90) DAYS WILL BE PUMPED OUT AND FILLED WITH RIVER SAND.

8. INSPECTION AND TEST:

PRIOR TO BACKFILL THE PROPERTY OWNER WILL OBTAIN FROM THE SEWER DISTRICT A CERTIFICATE OF INSPECTION AND ACCEPTANCE OF THE HOUSE SERVICE PIPING. THE INSPECTOR SHALL WALK THE PIPE TO INSURE THAT EACH LENGTH IS FIRMLY BEDDED AND UNDISTURBED BY HIS WEIGHT ON ANY PORTION OF THE PIPE. THE INSPECTOR SHALL THEN ADMIT A 3" IN DIAMETER WOODEN BALL THROUGH THE CLEANOUT AT THE HOUSE TO CHECK FOR ADEQUATE SLOPE AND FREEDOM FROM OBSTRUCTIONS. EVIDENCE OF ANY SIGNIFICANT INFILTRATION, FAILURE TO FREELY PASS THE BALL, CRACKED PIPE OR FITTING, IMPROPER BEDDING, IMPROPER JOINTS AND/OR ANY DEVIATION FROM THESE SPECIFICATIONS WILL BE GROUNDS FOR REJECTION AND REFUSAL TO ISSUE A PERMIT TO CONNECT TO THE SEWER SYSTEM UNTIL ALL DEFICIENCIES ARE CORRECTED.

**WHERE REINSPECTION IS NECESSARY BY REASON OF FAILURE TO PASS A PRIOR INSPECTION, A FEE OF \$25.00 (TWENTY FIVE DOLLARS AND NO CENTS) WILL BE CHARGED FOR EACH REINSPECTION.**

9. BACKFILL:

AS SOON AS THE INSPECTOR HAS PASSED AND ACCEPTED THE HOUSE SEWER CONNECTION THE EXCAVATION SHALL BE BACKFILLED WITH SELECTED MATERIAL FROM THE EXCAVATION.

- BEFORE BACKFILLING, CONTACT THE SEWERAGE DISTRICT AT 783-5100 SOMEONE FROM THE DISTRICT WILL COME TO INSPECT YOUR SEWER LINE.

ST. CHARLES PARISH DEPARTMENT OF WASTEWATER  
404 MILLING AVE  
P.O. BOX 705  
LULING, LOUISIANA 70070

**NOTICE:**

CALL THIS OFFICE AT 783-5100 FOR INSPECTION OF LINE BEFORE LINE IS COVERED. AFTER INSPECTION HAS BEEN APPROVED AND YOU BACKFILL YOUR LINE, YOU MUST CALL FOR A BOX INSPECTION. THIS IS TO VERIFY THAT YOU HAVE INSTALLED A SEWER BOX LEVEL TO GROUND AT FINAL GRADE OVER THE 4-INCH CHECK VALVE AND ALL 6-INCH CLEAN-OUTS. PROPERTY MUST BE TO FINAL GRADE WHEN BOXES ARE INSTALLED. ALL INSPECTIONS WILL BE MADE BETWEEN 12:30PM AND 2:30 PM. CALL IN THE MORNING FOR INSPECTION THE SAME DAY.

INSPECTIONS:

- 1<sup>ST</sup>---CONNECTION
- 2<sup>ND</sup>---BOXES

**PLEASE NOTE:**

6-INCH 45° (MUST BE ABLE TO OPEN BOX AND ACCESS CLEAN-OUT)

NO 90° FROM HOUSE CONNECTION TO CHECK VALVE – MUST BE TWO 45°S

CHECK VALVE – ROUND OR SQUARE BOX

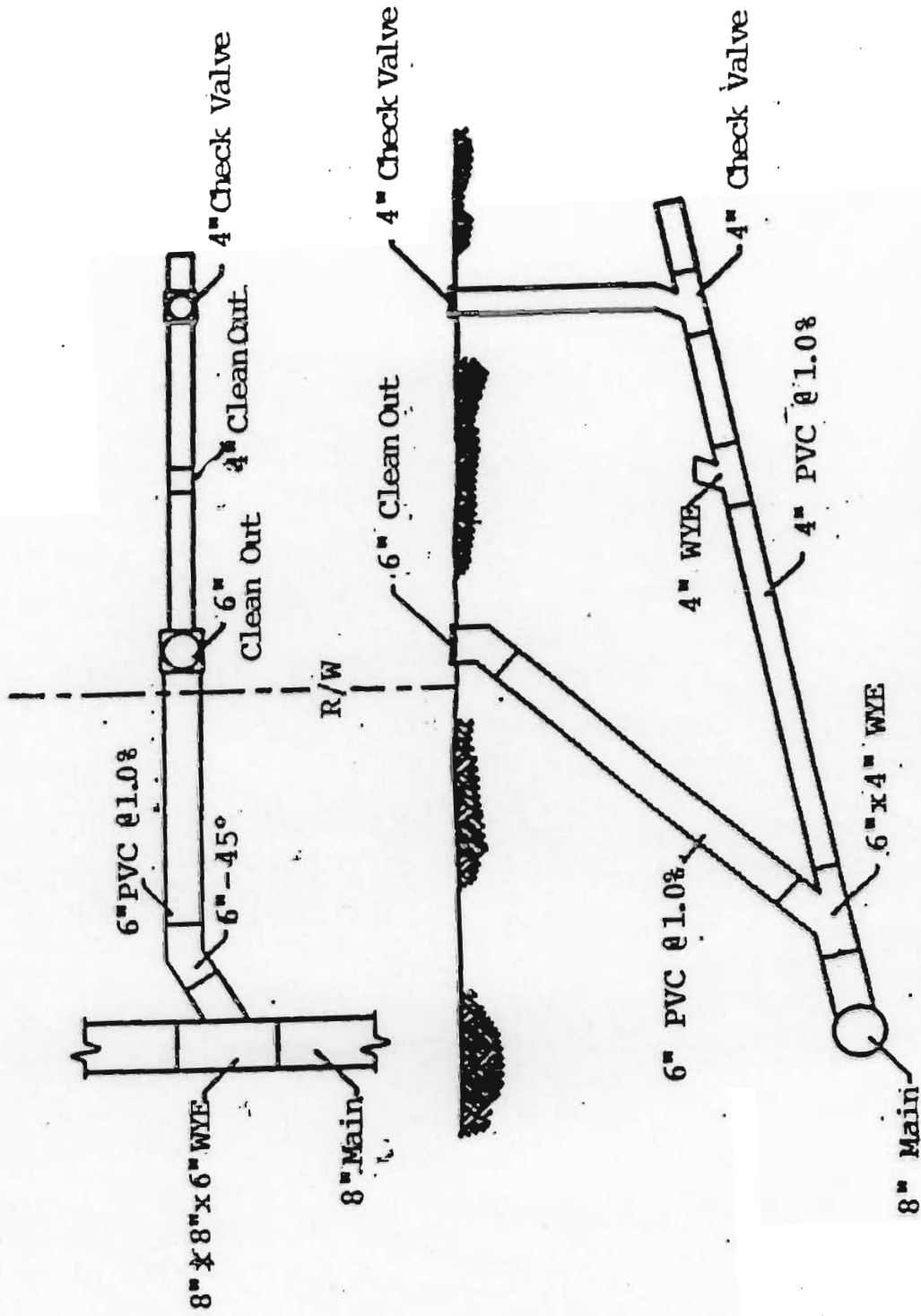
6-INCH CLEAN-OUT – RECTANGLE BOX

METAL RING IS REQUIRED IF IN THE DRIVEWAY

BOXES MUST BE PLAINLY MARKED “SEWER” OR NOTHING MARKED ON IT

BOXES MARKED “WATER” WILL BE REJECTED.

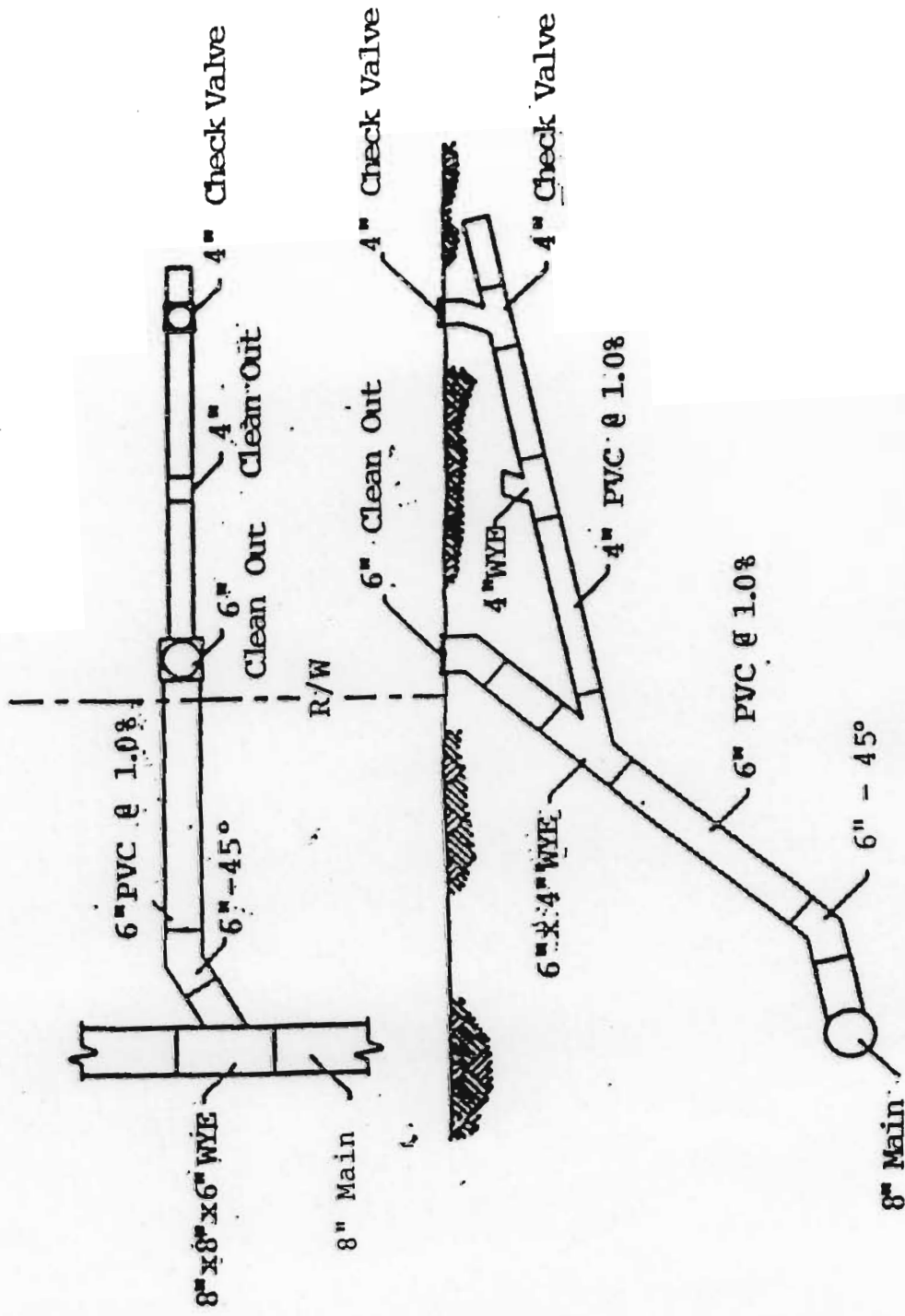
\*\*CLEAN OUT REQUIRED EVERY 45'



TYPICAL SERVICE CONNECTION

LESS THAN 4' DEEP

\*\*CLEAN OUT REQUIRED EVERY 45'

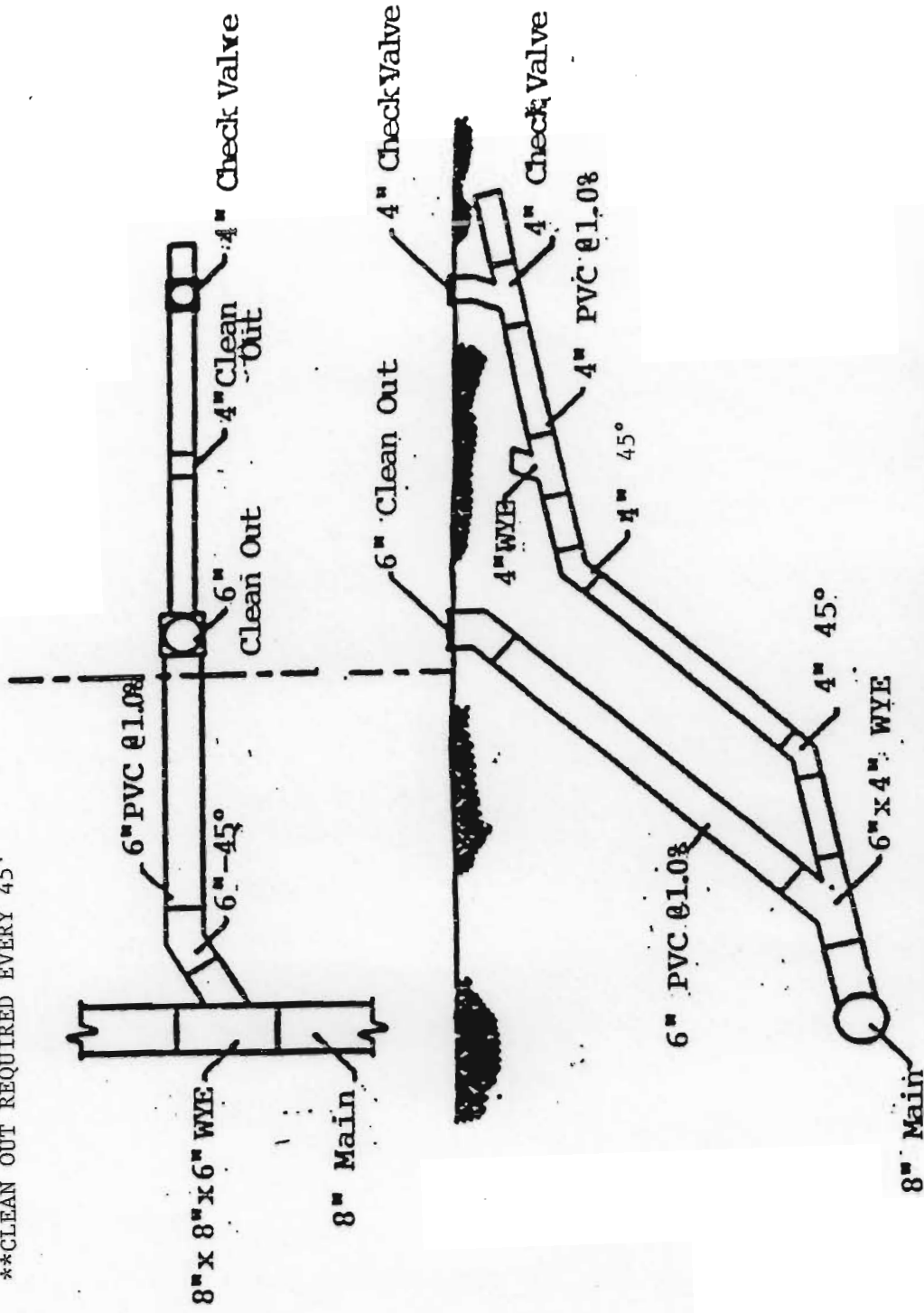


TYPICAL SERVICE CONNECTION

GREATER THAN 4' DEEP.



\*\*CLEAN OUT REQUIRED EVERY 45'



**TYPICAL SERVICE CONNECTION**  
GREATER THAN 4' DEEP - ALTERNATE 1